

# BEEF

## Whole Primal/Carton

Blade	Rump Cap
Chuck	Shortloin
Cube Roll (Scotch Fillet)	Striploin
Eye Round	Tenderloin (Fillet) 2-3lbs (0.9-1.4kg)
Knuckle (Nut)	Tenderloin (Fillet) 3-4lbs (1.4-1.8kg)
O.P. Rib Rack	Tenderloin (Fillet) 4lbs up (1.8 + kg)
Outside (Silverside)	Tenderloin Butt (Head of Fillet)
Rost Biff (Cap off Rump)	Topside
Rump	

## Portioned

Blade Steak	Schnitzel (Tenderized)
Fillet Steak (Tenderloin)	Scotch Fillet Steak (Cube Roll)
Fillet Steak, Centre Cut (No Head, No Tail)	T-Bone Steak
New York Steak (Striploin)	Top Sirloin (Rump Cap)
O.P. Rib Cutlet (French Trimmed)	Rost Biff (Cap off Rump)
Rump Steak	Bonded Tenderloin
Sandwich Steak (Tenderized)	

## Processed

Bones (Cut Up)	Marrow Bones
Burger Patties	Mince (85% Lean)
Cantonese (Thin Sliced)	Mince-Premium (95% Lean)
Corned Eye Round	Mince-Hamburger
Corned Silverside (outside)	Shin, Gravy Beef
Diced Chuck	Spare Ribs
Diced Blade	Stir-fry / Stroganoff (Lean Strips)
Diced Rump	Steak & Kidney

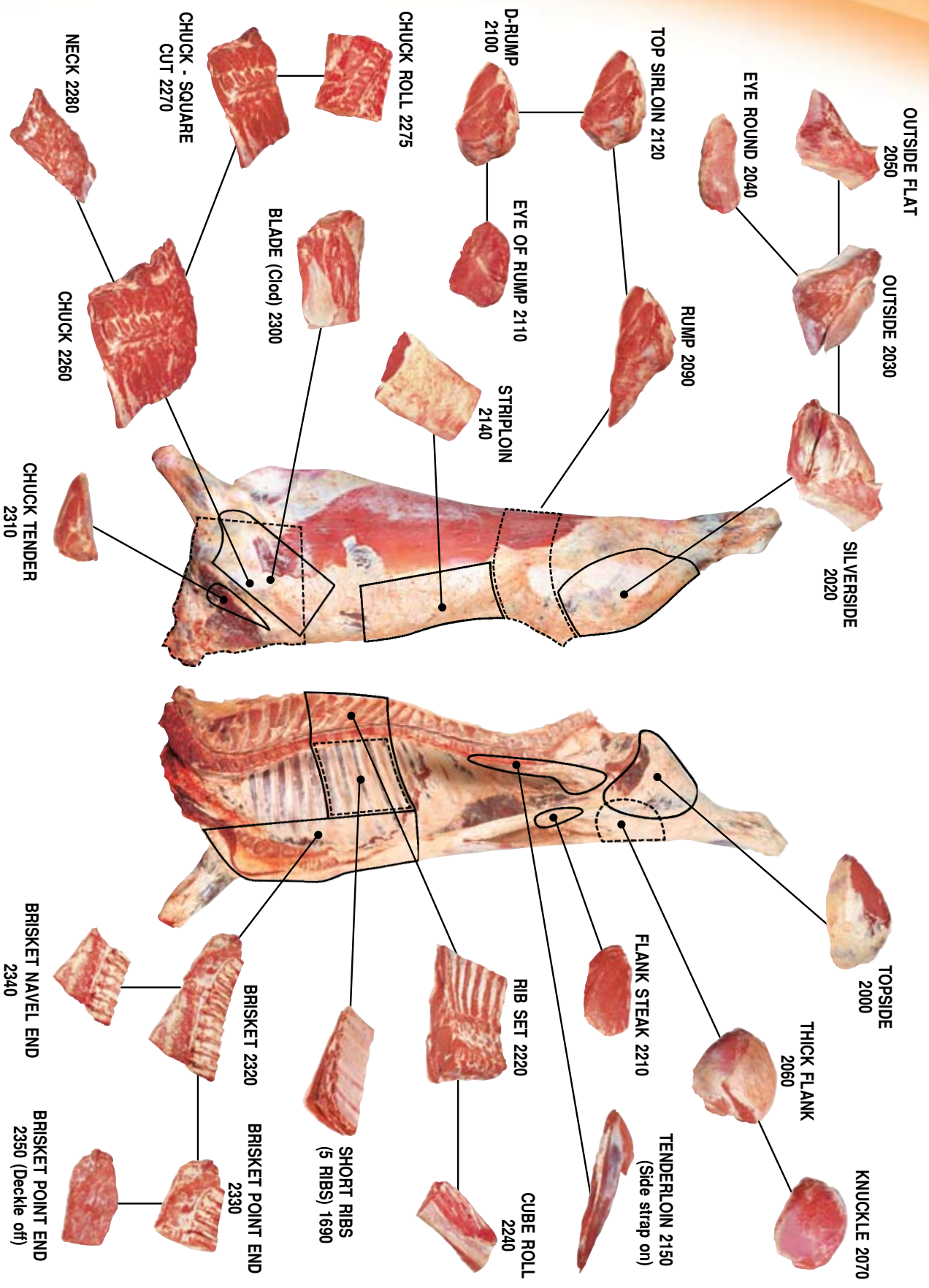
## Offal

Cheeks (Trimmed)	Tails (Jointed)
Kidneys	Tongues
Livers	Tongues (Corned)



# BEEF

## Beef Primal Cuts



# VEAL

## Whole Primal/Carton

Chuck  
Backstrap  
Blade (Clod)  
Knuckle (Nut)  
Leg Sets  
Loin, Bone in

Outside (Silverside)  
Racks (OP Rib)  
Rump  
Tenderloin  
Topside (Cap on / Cap off)

## Portioned/Processed

Blade Steak (Clod)  
Bones (Cut Up)  
Cutlet (French Trimmed)  
Diced (Hand Diced)  
Loin Medallions (Escalope)  
Mince (Pure Veal)  
Osso Bucco

Rump Steak  
Schnitzel (Tenderized,  
Crumbed/Uncrumbed)  
Shanks (French Trimmed) F/Q, H/Q  
Shanks (Tipped Both Ends) F/Q, H/Q  
Stir-fry / Stroganoff (Lean Strips)  
T-Bone Steak  
Tenderloin Medallions

## Offal

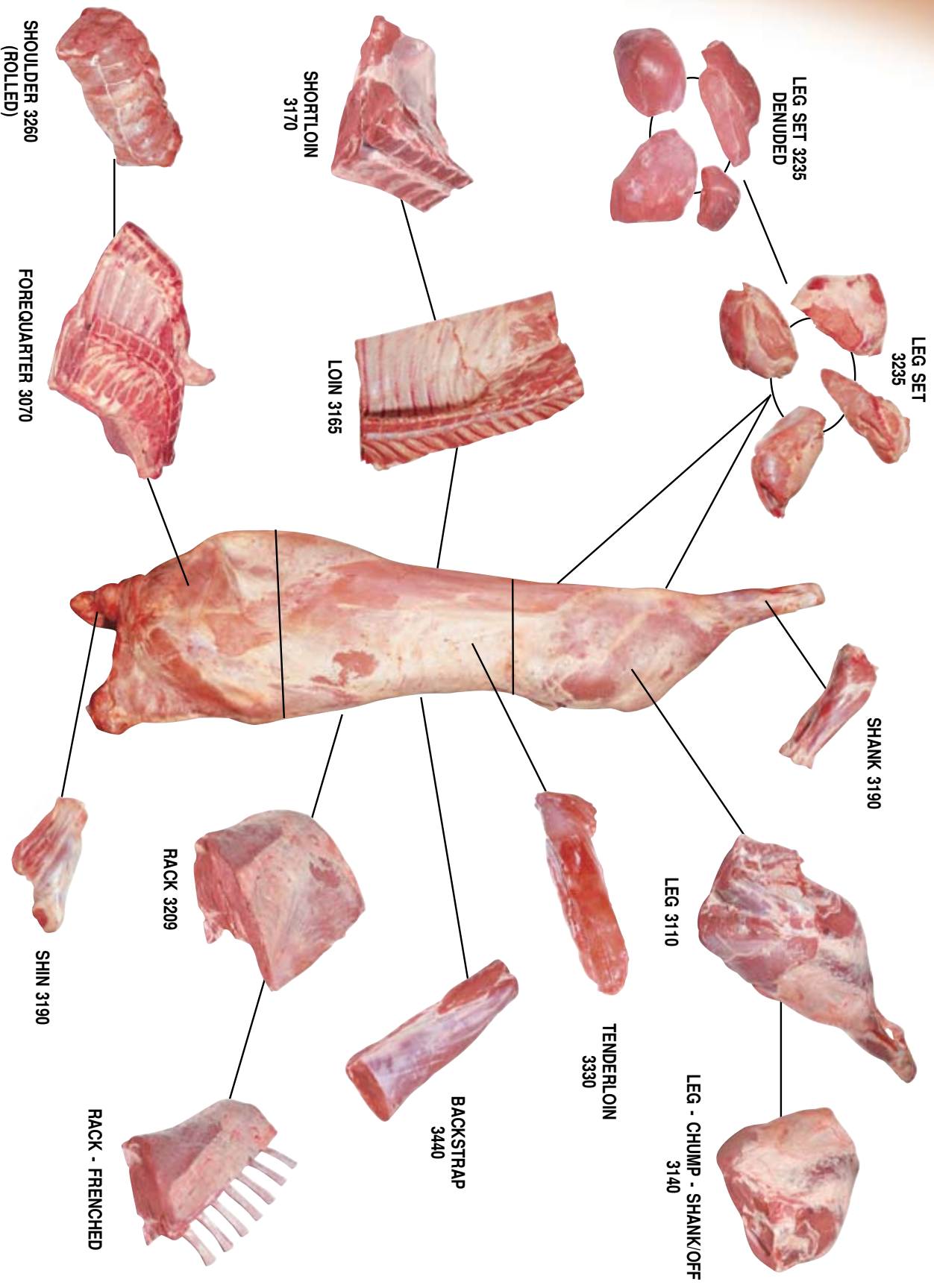
Kidney  
Liver

Sweetbreads



# VEAL

## *Veal Primal Cuts*



# LAMB

## Whole Primal/Carton

Backstrap (Silverskin on / off)  
Forequarter (Bone In)  
Leg (Bone In)  
Loin  
Rack (Cap on / Cap off)

Rump (Cap on / Cap off)  
Shoulder (Bone In)  
Tenderloin (Fillet)  
Whole Lamb Carcase

## Portioned/Processed

Backstrap, Denuded  
Bones  
Cantonese (Thin Sliced)  
Chump Chops  
Cutlets (Cap On, French Trimmed)  
Cutlets (Cap Off, French Trimmed)  
Cutlets (Party)  
Diced Leg  
Diced Shoulder  
Grilling Chops  
Leg Bone In Chump Off  
Leg Boned & Rolled  
Leg Boneless  
Leg Easy Carve  
Loin Boneless  
Loin Boned & Rolled  
Loin Chops

Mince  
Neck Chops  
Racks, 2-9 Rib (Cap On, French Trimmed)  
Racks, 2-9 Rib (Cap Off, French Trimmed)  
Rump (Cap on / Cap off)  
Rump Portioned  
Shank Forequarter (Tipped Both Ends)  
Shank Hindquarter (French Trimmed)  
Shoulder Boneless  
Shoulder Boned & Rolled  
Stir-fry / Stroganoff (Lean Strips)  
Tenderloin Denuded

## Offal

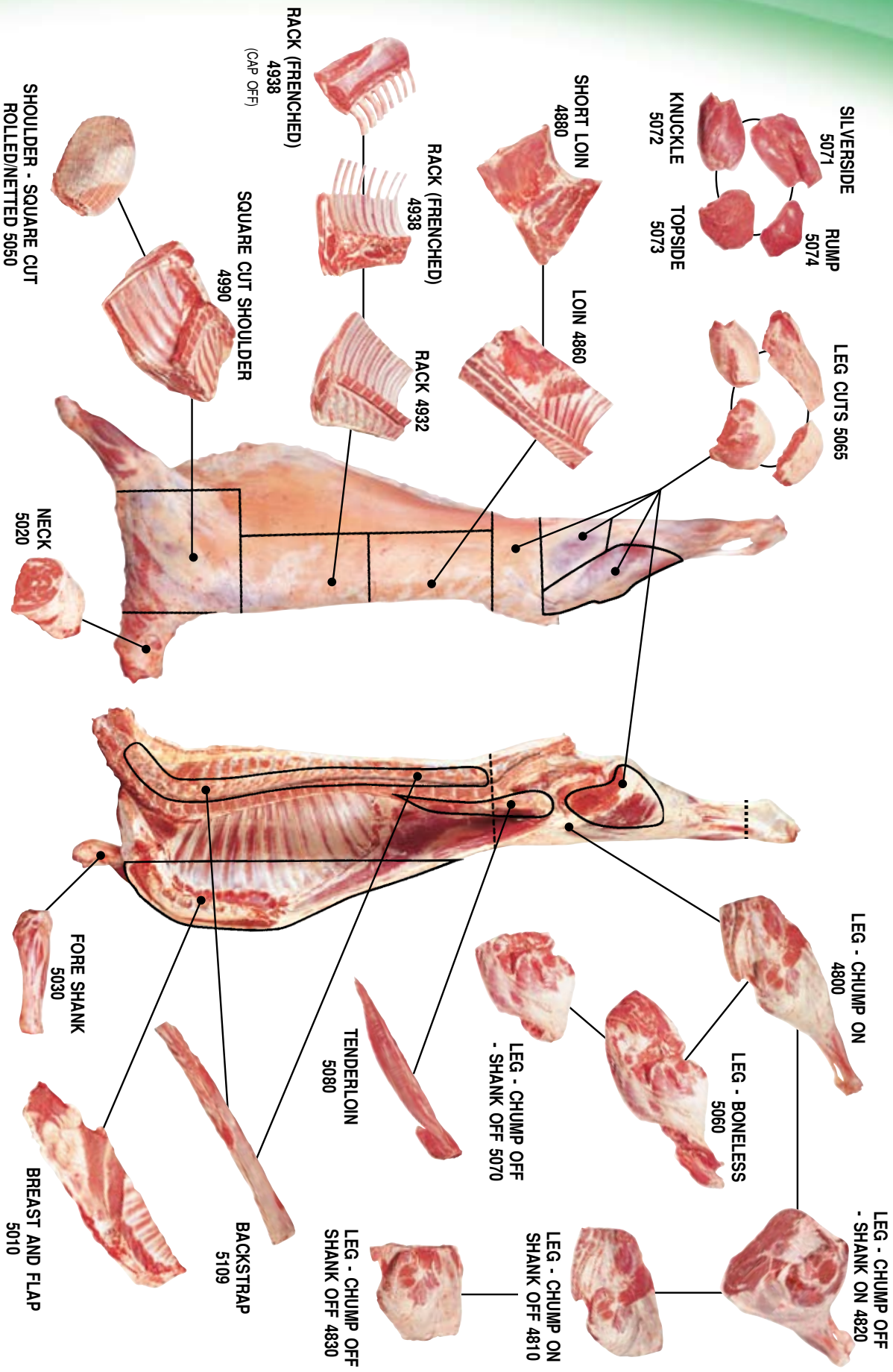
Brains 6 Sets per Punnet  
Kidneys

Livers  
Sweetbreads



# LAMB

## Lamb Primal Cuts



# PORK

## Whole Primal/Carton

Belly Bone In Skin On  
 Eye of Loin, Boneless  
 Leg Bone In Skin On  
 Loin Bone In Skin On

Neck  
 Racks French Trimmed Skin On  
 Suckling Pigs <10-30kg  
 Tenderloin  
 USA Ribs, Full plate, or Split

## Portioned/Processed

Belly Bone In Skinless  
 Belly Boneless Skinless  
 Belly Boneless Skin On  
 Bones Cut Up  
 Cantonese (Thin Sliced)  
 Cutlets Skinless  
 Cutlets Skin On  
 Hocks  
 Leg Boneless Skinless  
 Leg Boneless Skin On  
 Leg Boned & Rolled  
 Loin Boned & Rolled Skinless  
 Loin Boned & Rolled Skin On

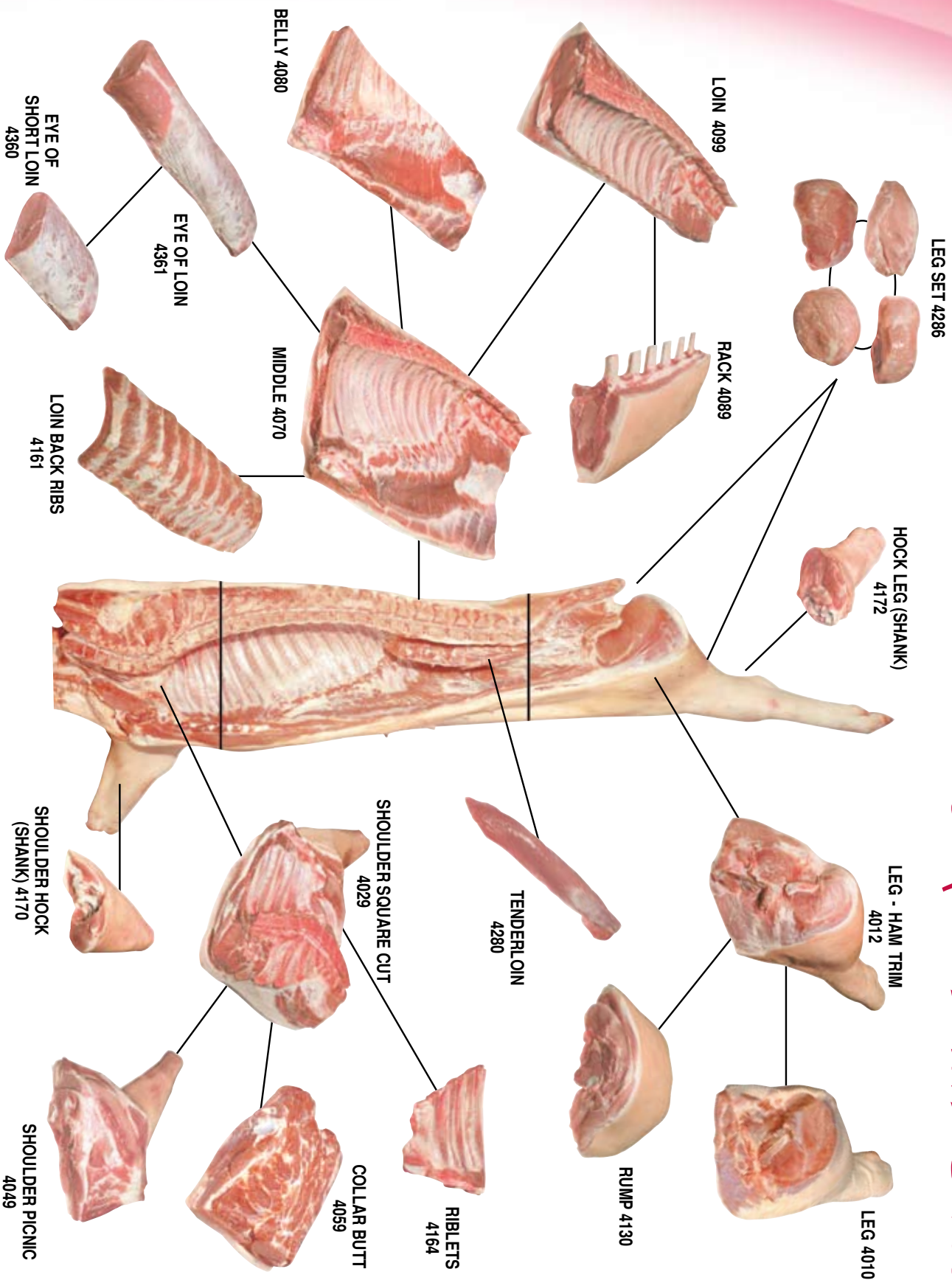
Loin Boneless Skinless  
 Loin Boneless Skin On  
 Loin Chops Skin On  
 Loin Chops Skinless  
 Mince  
 Ribs USA (Baby Back Ribs)  
 Schnitzel (Tenderized, Crumbed/Uncrumbed)  
 Shoulder Boned & Rolled Skin On  
 Shoulder Chops  
 Spare Ribs (Skin on / off)  
 Stir-fry / Stroganoff (Lean Strips)  
 Trotters

## Offal

Back Fat  
 Crepenette (Lace/Caul Fat)  
 Kidneys

Livers  
 Omentum  
 Skin (Crackle)

# PORK



*Pork Primal Cuts*

# POULTRY

## CHICKEN

### Portions/Processed

Bones	Mince
Breast Fillet, Skin Off, Doubles	Schnitzel, Uncrumbed
Breast Fillet, Skin Off Singles	Schnitzel, Crumbed
Breast Fillet, Skin On Singles	Supreme (Kiev), Skin On
Breast Fillet, Skin Off, Corn Fed	Supreme (Kiev), Skin Off
Breast Fillet, Skin On, Corn Fed	Supreme (Kiev), Corn Fed
Diced Breast Fillet	Stir-fry / Stroganoff (Lean Strips)
Diced Thigh Fillet	Tenderloin
Drumettes	Thigh Fillet, Skin Off
Drumstick	Thigh Fillet, Skin On
Maryland, Bone In, Skin On	Thigh Fillet, Skin Off, Corn Fed
Maryland Fillet, Skin On	Thigh Cutlets
Maryland, Corn Fed	Wings

### Whole Birds

Sizes Range from 12-24

Available as Corn Fed, Free Range & Organic

# DUCK

## Portions/Processed

Bones  
 Breast Fillet, Skin On  
 Breast Fillet, Skin On, Smoked  
 Eggs  
 Fat, Rendered

Liver  
 Maryland, Bone In, Skin On  
 Maryland Fillet, Boneless, Skin On  
 Mince  
 Supreme (Kiev) Skin On

## Whole Birds

Sizes Range from 14-24

Luv-A-Duck  
 Thirlmere

# TURKEY

## Portions/Processed

Bones  
 Breast Fillet, Skin Off  
 Breast Fillet, Skin On  
 Buffet  
 Tenderloin

Mince  
 Supreme, Skin On  
 Thigh Fillet, Skin Off  
 Thigh Fillet, Skin On

## Whole Birds

Frozen 2-10kg

Fresh Sizes Available on Request

# GAME & EXOTIC MEATS

## Kangaroo

Diced  
Rump

Striploin  
Tail

## Venison

Backstrap, Silver Skin On  
Backstrap, Denuded  
Bones  
Denver Leg

Racks  
Rumps  
Tenderloin  
Topside

## Crocodile

Body Meat, Boneless (1kg Packs)

Tail Meat, Boneless (1kg Packs)

## Rabbit/Hare

Rabbit, Farmed/White  
Rabbit, Wild

Hare, Wild

## Spatchcock

Butterfly  
Tunnel Boned

Whole No. 3-6

## Quail

Butterfly (6 per Tray)  
Eggs (12 per Tray)  
Maryland, Bone In, Skin On

Supreme (Kiev) (8 per Tray)  
Tunnel Boned (6 per Tray)

## Other Game Birds (Seasonal)

Geese  
Guinea Fowl

Pheasant  
Squab

For any other Exotic or Game products please contact our office.

# SMALLGOODS

## Hams

Champagne (Whole or Sliced)	Leg Ham, Bone In (5-7kg)
Double Smoked, Round, Boneless, Skin On, String Tied (Whole or Sliced)	Leg Ham, Bone In (7-9kg)
Double Smoked, Flat (Whole or Sliced)	Leg Ham, Bone In (9kg+)
Easy Carve (5-7kg, 7-9kg, 9kg+)	Prager (Whole or Sliced)
Hawaiian (Whole or Sliced)	Prosciutto (Halves)
Honey (Whole or Sliced)	Prosciutto (Sliced, 500grm Tray)
Leg Ham, Bone In (Halves)	Soccerball (Whole or Sliced)
	4 X 4 Square (Shoulder) (Whole or Sliced)

## Bacon

Bones	Picnic (Shoulder)
Diced (3kg pack)	Rind On (2.5kg pack)
Economy Café (2.5kg pack)	Rindless (1kg and 2.5kg packs)
Middles, Rind On	Short Cut (2.5kg pack)
Middles, Rindless	Streaky, Rindless (2.5kg pack)

## Sausages

Full range available as Thick, Thin, Chipolatas & Blanched

Beef	Lamb & Mint
Chicken	Mexican (Hot)
Chicken & Tarragon	Pork
Cumberland (Pork)*	Pork & Fennel
Herb & Garlic	Tomato & Onion
Italian	Wagyu and Basil*
Lamb & Rosemary	

\*only available thick casing.

# Cooked, Cured & Other Products

Berliner (Whole or Sliced)  
Black Pudding  
Bresola  
Cabanossi (Whole or Sliced)  
Chicken Breast Smoked (Whole or Sliced)  
Chicken Roll (Whole or Sliced)  
Chorizo  
Csabai  
Danish Salami (Whole or Sliced)  
Devon (Whole or Sliced)  
Frankfurts, Australian  
Frankfurts, Cocktail  
Frankfurts, Continental  
Hungarian Salami  
Kassler (Smoked Pork Loin)  
Kranski

Leberkase  
Mortadella (Whole or Sliced)  
Pancetta, Flat (Whole or Sliced)  
Pancetta, Round (Whole or Sliced)  
Pastrami (Whole or Sliced)  
Pepperoni (Whole or Sliced)  
Polish Salami (Whole or Sliced)  
Pork Hocks, Smoked  
Pork Neck, Smoked  
Rare Roast Beef (Whole or Sliced)  
Roast Lamb, Boneless (Whole or Sliced)  
Roast Pork, Boneless (Whole or Sliced)  
Silverside, Cooked, Corned (Whole or Sliced)  
Speck  
Soppressa Salami (Whole or Sliced)  
Spanish Salami (Hot) (Whole or Sliced)





**Dick Stone Pty. Ltd.** ABN 48 000 132 329

**Head Office:** 22 George Young St, Regents Park, NSW 2144

**Postal:** PO Box 694, Regents Park BC, NSW 2143

**Phone:** 02 9795 2200 **Fax:** 02 9795 2222 **Email:** [sales@dickstone.com.au](mailto:sales@dickstone.com.au)